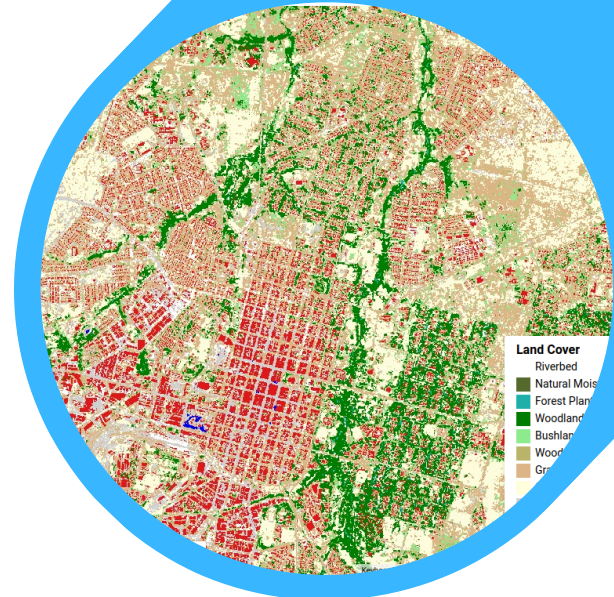


# HYBRID WORKFLOW FOR AUTOMATED THEMATIC ANALYSIS (HWATA)

Next-Generation GeoAI Platform for Automated  
Mapping & Geospatial Intelligence



AI.Geolabs  
305 Apa Garden Palace,  
3-28 Oyamagaoka,  
Machida, Tokyo  
Japan

cou.kamusoko@aiqeolabs.com  
<https://aiqeolabs.com>

## AI.Geolabs

**Transform Imagery Into Actionable  
Intelligence**

HWATA empowers organizations to plan smarter, respond faster, and manage resources more effectively.

Automate your mapping workflow. Unlock geospatial intelligence at scale.

<https://aiqeolabs.com/>



## ABOUT HWATA

Hybrid Workflow for Automated Thematic Analysis (HWATA) is an advanced GeoAI platform that converts very high-resolution satellite, aerial, and drone imagery into accurate vector datasets such as building footprints, roads, vegetation, and water features. It replaces costly, slow, and error-prone manual mapping and traditional photogrammetry with fast, automated, and scalable solutions for government departments, local authorities, businesses, engineering firms, and disaster response organizations.

### WHY HWATA?

- ✓ **Faster & Highly Scalable** - Processes thousands of square kilometers in hours, not months.
- ✓ **Cost-effective** - Reduces labor and photogrammetry processing costs by up to 70%.
- ✓ **Accuracy & Reliability** - GeoAI-assisted extraction ensures high precision and consistency, even in informal settlements.

## CORE CAPABILITIES

HWATA is built on advanced deep-learning architectures designed for high-precision segmentation.

- ✓ **Automated feature extraction** from 20-50 cm very-high-resolution imagery.
- ✓ **Generate GeoJSON, Shapefiles, KML, and CSV** outputs ready for GIS and CAD systems.
- ✓ **Supports multiple thematic classes:** buildings, roads, vegetation, water features, and other thematic features.

## APPLICATIONS & USE CASES

- ✓ **Urban Planning** - City base-maps, zoning, urban growth monitoring
- ✓ **Land Administration** - Cadastral modernization, informal settlement regularization
- ✓ **Property Tax Modernization** - Undeclared building detection, parcel compliance auditing
- ✓ **Climate & Environment** - Deforestation, vegetation health, carbon monitoring